



15 Richmond Road, Connah's Quay

£215,000 Freehold



Beautifully presented semi-detached home in convenient location • Recently renovated modern kitchen with island and integrated appliances. • Option to create separate spaces if desired, with a great open-plan living area. • Two spacious double bedrooms and single bedroom • Complemented by a family bathroom and a convenient downstairs WC. • Stunning south-east facing patio garden • Mains gas central heating via Ideal I-Mini C30 • Nearby local transport links, amenities and schools • Close to the great Wepre Park, local swimming pool and other popular amenities



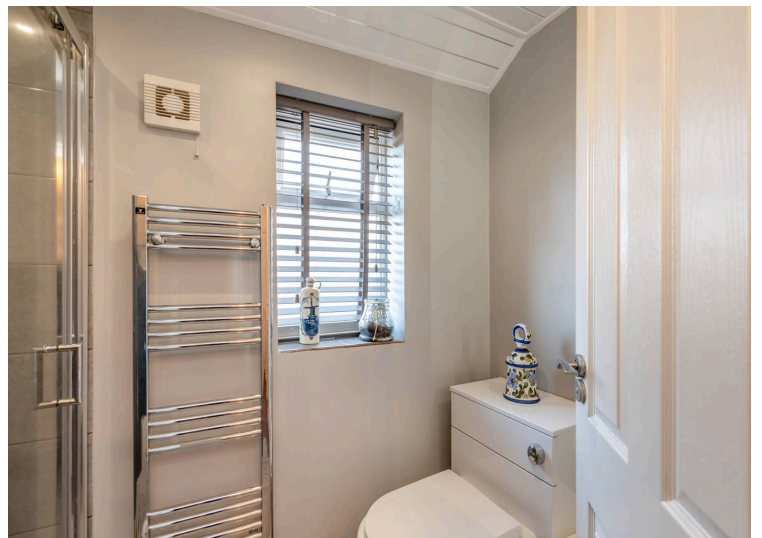
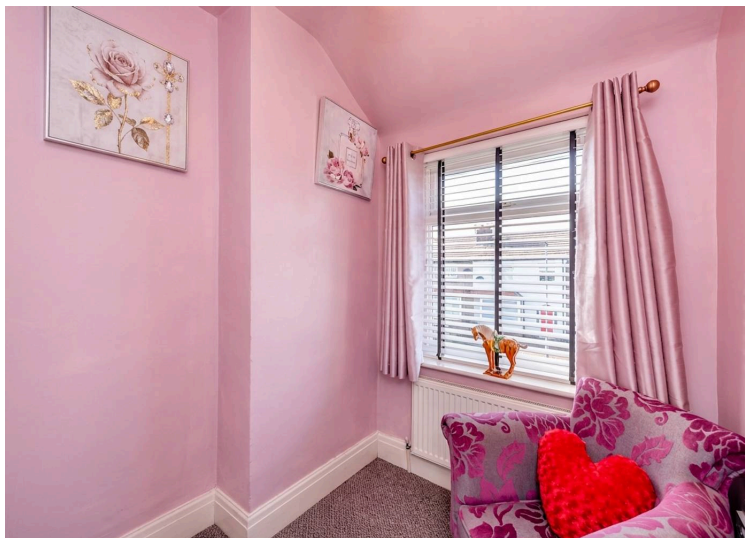
Beautifully presented 3-bed semi in a convenient location. Features open-plan living, modern kitchen, south-east patio garden, sheds, double kennels, gas heating, and easy access to amenities.

Council Tax band: C

Tenure: Freehold

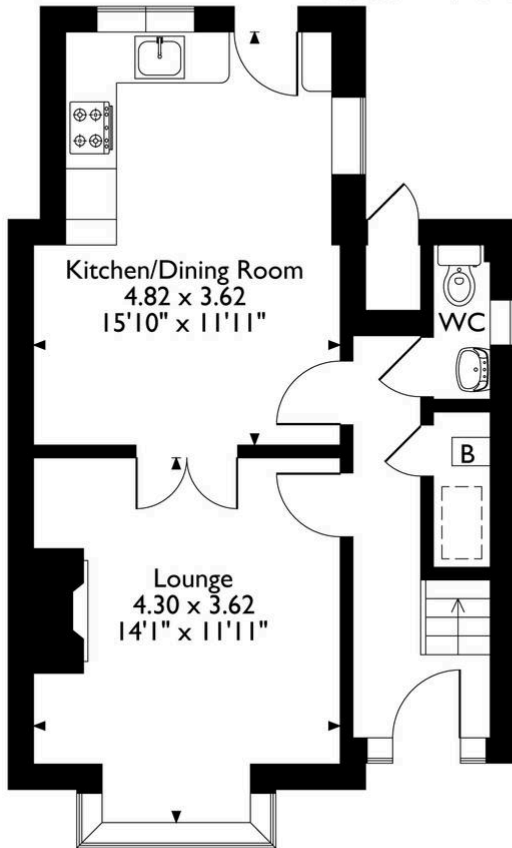
EPC Energy Efficiency Rating: D

EPC Environmental Impact Rating: D

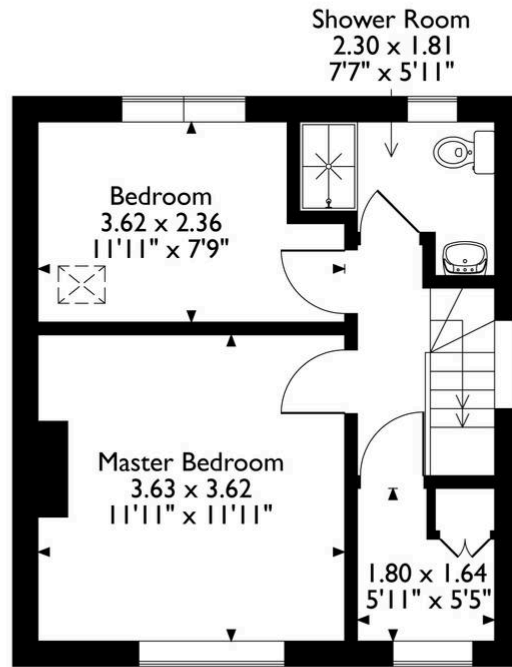




Richmond Road, Connah's Quay, Deeside
 Approximate Gross Internal Area
 Main House = 73 Sq M/786 Sq Ft
 Outbuilding = 1 Sq M/11 Sq Ft
 Total = 74 Sq M/797 Sq Ft



Ground Floor



First Floor

Please note that the location of doors, windows and other items are approximate and this floorplan is to be used for illustrative purposes only. Unauthorized reproduction is prohibited.

Reades

