



The Laurels Rhos Avenue, Penyffordd

£340,000 Freehold



A property brimming with potential with the benefit of no onward chain • Beautiful 3 bedroom, Edwardian bungalow • Plot extending to just over a quarter of an acre & set at the end of its own exclusive private lane. • Offers a separate dining room, kitchen and lounge all in need of modernisation • Large, light-filled conservatory offering direct garden access • Double glazing and gas central heating • Large, private garden with south facing aspect • Detached garage with workshop area, and additional driveway parking for multiple vehicles • Close to amenities, local schools and transport links • These particulars have computer generated images showing potential refurbishment options



A characterful Edwardian bungalow in sought-after village location, offering space and privacy. Perfect for renovation with generous plot, double glazing, gas heating, conservatory, spacious garden, detached garage, and driveway. Close to amenities, schools, and transport links for convenience and accessibility. Full of charm and potential, ideal for creating a bespoke home.

Council Tax band: E

Tenure: Freehold

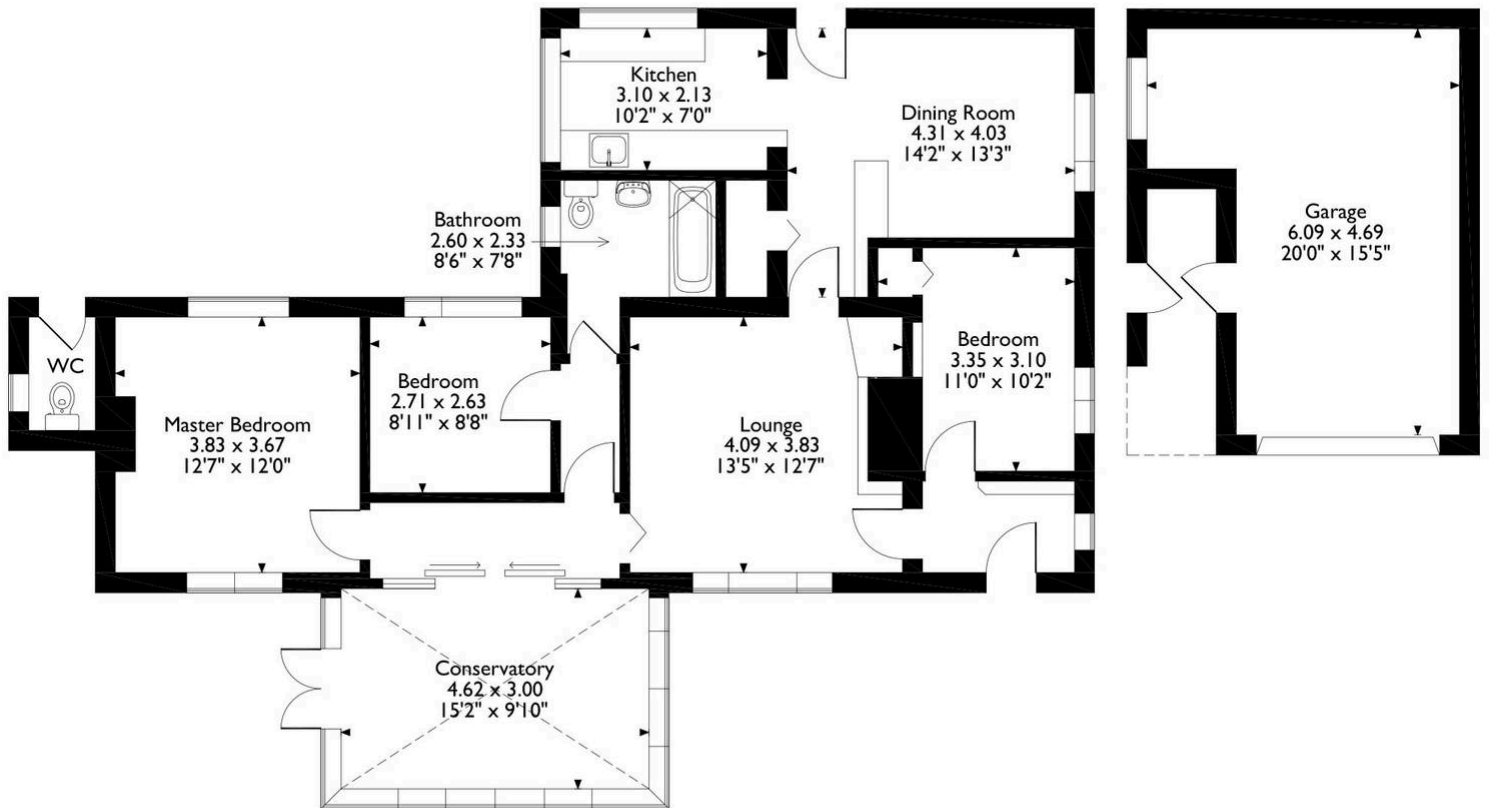
EPC Energy Efficiency Rating: D

EPC Environmental Impact Rating: E





The Laurels, Rhos Avenue, Penyffordd, Chester
Approximate Gross Internal Area
Main House = 103 Sq M/1109 Sq Ft
Garage = 23 Sq M/248 Sq Ft
Total = 126 Sq M/1357 Sq Ft



Please note that the location of doors, windows and other items are approximate and this floorplan is to be used for illustrative purposes only. Unauthorized reproduction is prohibited.

You can include any text here. The text can be modified upon generating your brochure.

Please call 01244560745 to arrange a viewing

Reades

